

MONTHLY MEMBERSHIP PROGRESS REPORT

LOCATION WISCONSIN

District 27 D2

Results as of: 3/31/2022

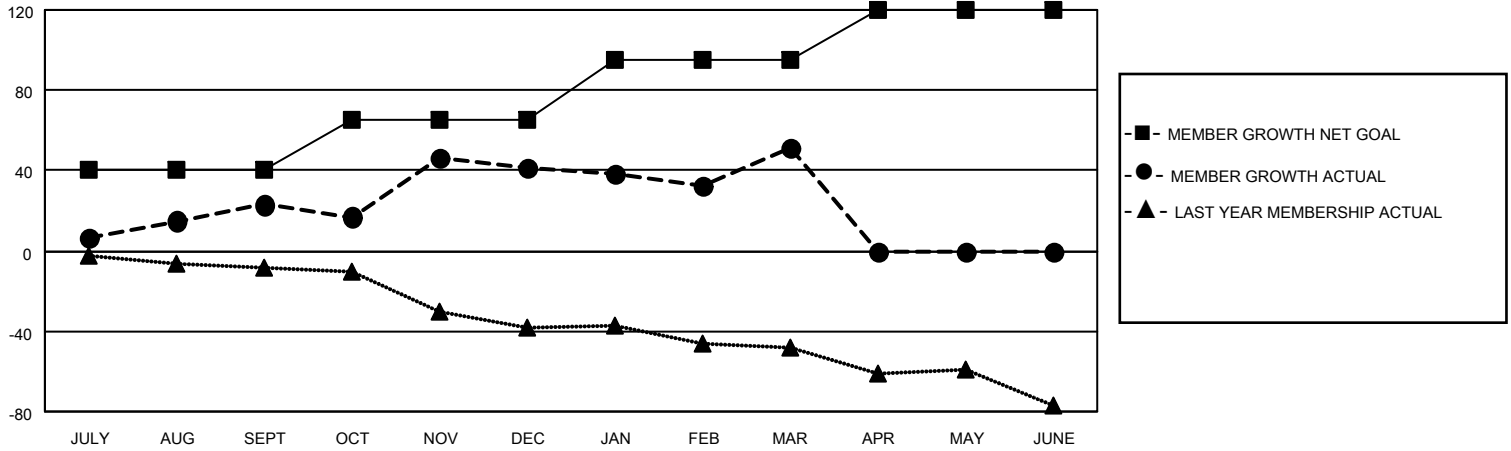
Clubs			
RESULTS FOR 2021-2022			
QUARTER	NEW CLUB GOAL	NEW CLUBS	DROPPED CLUBS
JULY/AUG/SEPT	0	0	0
OCT/NOV/DEC	0	0	1
JAN/FEB/MAR	0	0	0
APR/MAY/JUNE	1	0	0

Members			
RESULTS FOR 2021-2022			
QUARTER	MEMBER GROWTH NET GOAL	MEMBER GROWTH ACTUAL	DROPPED MEMBERS ACTUAL (including transfers)
JULY/AUG/SEPT	40	50	25
OCT/NOV/DEC	25	50	30
JAN/FEB/MAR	30	50	35
APR/MAY/JUNE	25	0	0

GOALS AND ACTUAL NEW CLUBS CUMULATIVE



GOALS AND ACTUAL MEMBERS CUMULATIVE



DROPPED CLUBS: 1	
DROPPED MEMBERS	
DECEASED	12
CLUB CANCELLED	0
OTHER	78
TOTAL	90

36 CLUBS OF 48 ADDED 1 OR MORE NEW MEMBERS

[CLICK HERE FOR CUMULATIVE MEMBERSHIP DATA](#)

<u>GENDER DISTRIBUTION</u>	
MALE	1,113 (71.39%)
FEMALE	446 (28.61%)
NON BINARY	0 (0.00%)
PREFER NOT TO ANSWER	0 (0.00%)
TOTAL FAMILY UNIT MEMBERS	335
FAMILY MEMBERS PAYING HALF DUES	172